



# Q Series High Bay

## Product Specifications



The Q Series High Bay family features a lightweight extruded aluminum body, 2FT and 4FT length options and up to 60,000 lumens resulting in a versatile solution for endless applications. The included mounting hardware makes the Q Series High Bay quick to install and will provide a long-lasting, durable light source for years to come.

## Reasons to choose the LED Q Series High Bay from TCP

- Lightweight, quick install construction
- Standard frosted lens for glare control
- No shadows for smooth, even lighting
- Damp location rated
- 250W or 400W HID equivalent
- 0-10V smooth dimming
- 50,000 hour rated life
- Wide 160° field angle beam spread reduces cave effect
- Optional controls available
- Includes 6-foot power cord

## Ideal Applications

- High ceiling locations
- Commercial settings
- Industrial settings
- Warehouses



\*Scan me with your phone to see the QHB in action!

TCP®

325 Campus Dr. | Aurora, Ohio 44202 | P: 800-324-1496 | tcp.com



5 YEAR  
WARRANTY

Not all versions of this product are qualified on the DLC QPL. To view our DLC qualified products, please consult the DLC Qualified Products List at [www.designlights.org/qpl](http://www.designlights.org/qpl).



# Q Series High Bay - 2'

## Applications

The Q Series High Bay family is a versatile solution for endless applications. With a lightweight extruded aluminum body and included mounting hardware, the Q Series QHB by TCP is quick to install and will provide a long-lasting, durable light source for years to come.

## Features

- Lightweight, quick install construction
- Standard frosted lens for glare control
- No shadows for smooth, even lighting
- Damp location rated
- 0-10V smooth, no-flicker dimming
- Operating temperature: -4°F to 122°F
- 250W or 400W HID equivalent
- Long 50,000 hour rated life
- LED design provides wide beam spread and clean cutoff
- Optional battery backup and motion sensors available
- Includes 6-foot power cord

## Hardware Included

- 2 tong hangers
- 5' jack chains
- 6' pre-wired cord

|             |      |
|-------------|------|
| Item Number |      |
| Notes       | Type |



### Listings

cULus Listed  
RoHS Compliant  
DLC 5.1 Standard

### Warranty

Five year limited warranty against defects in manufacturing.

## Installation

Before hanging installation, please consult your local ordinances and building codes.

## Catalog Ordering Matrix Example: QHB2UZDA250K

| FAMILY                         | LENGTH            | VOLTAGE                                    | CONTROLS                  | LUMEN PACKAGE (Power) <sup>1,2</sup>   | CCT <sup>4</sup>                         | FACTORY INSTALLED OPTIONS <sup>3</sup>                | FACTORY INSTALLED CONTROLS <sup>5</sup>  |
|--------------------------------|-------------------|--|---------------------------|--|--|---|--|
| <b>QHB</b> - Q Series High Bay | <b>2</b> - 2 foot | <b>U</b> - 120-277V<br><b>H</b> - 347-480V | <b>ZD</b> - 0-10V Dimming | <b>A2</b> - 15,100L (110W)<br><b>E4</b> - 17,550L (130W)<br><b>A3</b> - 25,100L (165W)<br><b>A4</b> - 30,500L (220W)<br><b>A5</b> - 35,000L (260W) | <b>40K</b> - 4000K<br><b>50K</b> - 5000K | <b>Blank</b> - No Add-on<br><b>B</b> - Battery Backup | <b>Blank</b> - No controls<br><b>MS1</b> - Microwave Motion Sensor 120-277V<br><b>LS1</b> - PIR Motion Sensor 120V, 277V or 347V<br><b>LS1D</b> - PIR Motion/Daylight Sensor 120V, 277V or 347V<br><b>LS4</b> - PIR Motion Sensor 240V or 480V<br><b>IS</b> - Integrated Sensor<br><b>SM</b> - SmartBox with Microwave Sensor<br><b>NLS</b> - Network Lighting PIR Sensor <sup>6</sup> |

<sup>1</sup> Approximate lumen output. Actual performance may vary based on CCT, options selected and end use application

<sup>2</sup> Actual wattage may differ by +/- 10%

<sup>3</sup> Battery backup outputs 3,000L when in use

<sup>4</sup> Other CCT available special order. Longer lead times will apply

<sup>5</sup> IS Sensor only available in the A2, A3, and A4 packages at this time

<sup>6</sup> NLS Sensor only available in A2, A3 and A4 packages at this time

## Field Installed Accessories

- QHB2WGUARD1 - Wire Guard for 110W Model
- QHB2WGUARD2 - Wire Guard for 130W-220W Models
- QHB2SMOUNT1 - 110W Surface Mount Kit
- QHB2SMOUNT2 - 130W-220W Surface Mount Kit
- ISREMOTE - Remote for Integrated Sensor



**QHB2SMOUNT1/QHB2SMOUNT2 Surface Mount Kit**  
(Shown on QHB2UZDA250K)

TCP®

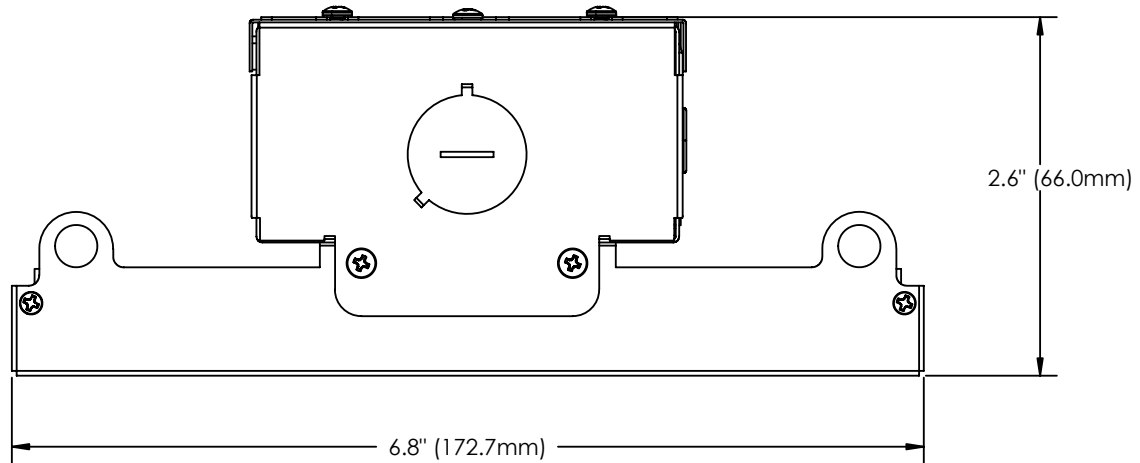
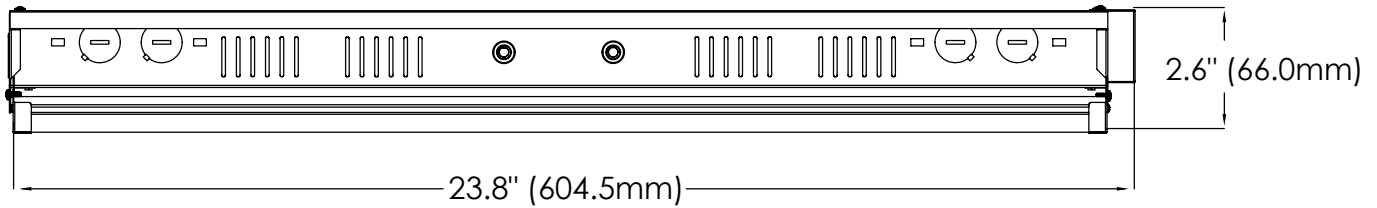
325 Campus Dr. | Aurora, Ohio 44202 | P: 800-324-1496 | tcp.com



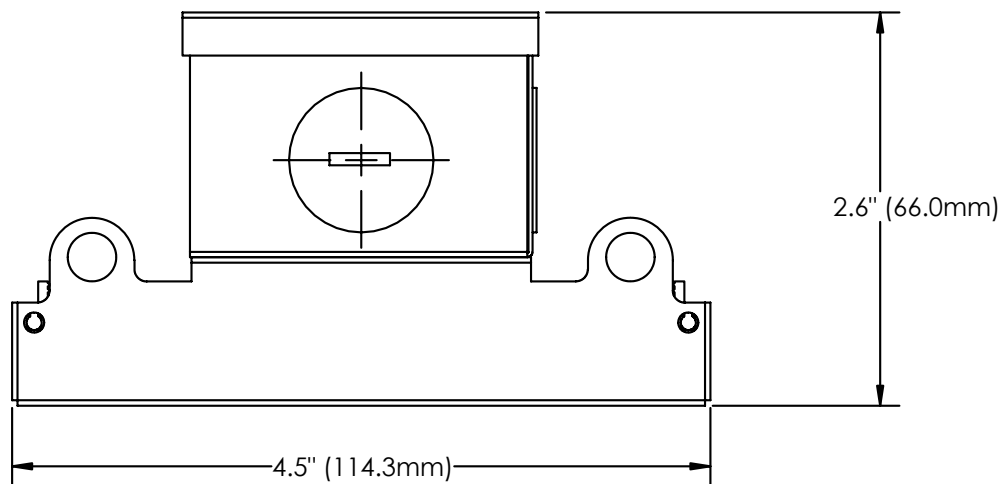
**5 YEAR**  
WARRANTY

Not all versions of this product are qualified on the DLC QPL. To view our DLC qualified products, please consult the DLC Qualified Products List at [www.designlights.org/apl](http://www.designlights.org/apl).

## Wireline Dimensions



**QHB2UZDE450K (WEIGHT: 5.84lbs), QHB2UZDA350K (WEIGHT: 6.94lbs) & QHB2UZDA450K (WEIGHT: 7.61lbs)**



**QHB2UZDA250K (WEIGHT: 4.85lbs)**

## Photometric Report

### Spacing Criterion

#### QHB2UZDE4xxK

|                            |      |
|----------------------------|------|
| Spacing Criterion (0-180)  | 1.22 |
| Spacing Criterion (90-270) | 1.22 |

#### QHB2UZDA4xxK

|                            |      |
|----------------------------|------|
| Spacing Criterion (0-180)  | 1.22 |
| Spacing Criterion (90-270) | 1.20 |

#### QHB2UZDA3xxK

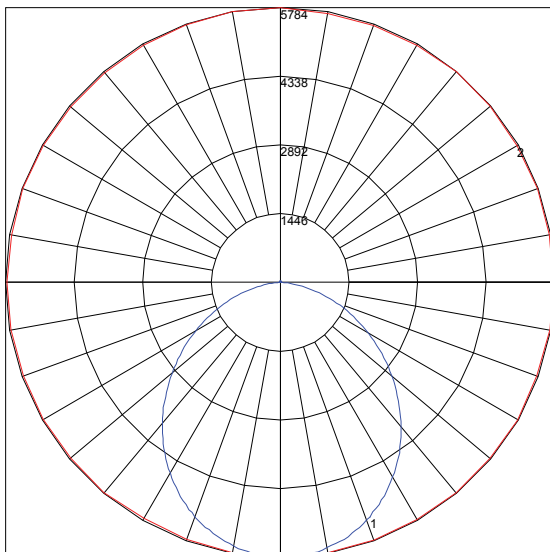
|                            |      |
|----------------------------|------|
| Spacing Criterion (0-180)  | 1.24 |
| Spacing Criterion (90-270) | 1.22 |

#### QHB2UZDA2xxK

|                            |      |
|----------------------------|------|
| Spacing Criterion (0-180)  | 1.22 |
| Spacing Criterion (90-270) | 1.24 |

Based on photometric data for  
TCP Item # QHB2UZDA250K

### Polar Graph



Maximum Candela = 5784.2 Located At Horizontal Angle = 90, Vertical Angle = 2  
# 1 - Vertical Plane Through Horizontal Angles (90 - 270) (Through Max. Cd.)  
# 2 - Horizontal Cone Through Vertical Angle (2) (Through Max. Cd.)

Specifications and dimensions subject to change without notice.

### Coefficients of Utilization – Zonal Cavity Method

#### Effective Floor Cavity Reflectance 0.20

| RC | 80  |     |     |     | 70  |     |     |     | 50  |     |     |     | 30  |     |     |     | 10  |    |    |    | 0  |
|----|-----|-----|-----|-----|-----|-----|-----|-----|-----|-----|-----|-----|-----|-----|-----|-----|-----|----|----|----|----|
| RW | 70  | 50  | 30  | 10  | 70  | 50  | 30  | 10  | 50  | 30  | 10  | 50  | 30  | 10  | 50  | 30  | 10  | 50 | 30 | 10 | 0  |
| 0  | 118 | 118 | 118 | 118 | 115 | 115 | 115 | 115 | 110 | 110 | 110 | 105 | 105 | 105 | 100 | 100 | 100 | 98 | 98 | 98 | 98 |
| 1  | 108 | 104 | 100 | 96  | 106 | 101 | 98  | 94  | 97  | 94  | 91  | 92  | 90  | 87  | 88  | 86  | 84  | 82 | 82 | 82 | 82 |
| 2  | 99  | 91  | 84  | 79  | 96  | 89  | 83  | 78  | 85  | 80  | 75  | 81  | 77  | 73  | 78  | 74  | 71  | 69 | 69 | 69 | 69 |
| 3  | 90  | 80  | 72  | 66  | 88  | 78  | 71  | 65  | 75  | 69  | 64  | 72  | 67  | 62  | 69  | 65  | 61  | 59 | 59 | 59 | 59 |
| 4  | 83  | 71  | 63  | 56  | 80  | 70  | 62  | 55  | 67  | 60  | 54  | 64  | 58  | 53  | 62  | 57  | 52  | 50 | 50 | 50 | 50 |
| 5  | 76  | 64  | 55  | 48  | 74  | 62  | 54  | 48  | 60  | 53  | 47  | 58  | 52  | 47  | 56  | 50  | 46  | 44 | 44 | 44 | 44 |
| 6  | 71  | 57  | 49  | 42  | 69  | 56  | 48  | 42  | 54  | 47  | 42  | 52  | 46  | 41  | 51  | 45  | 40  | 38 | 38 | 38 | 38 |
| 7  | 65  | 52  | 44  | 38  | 64  | 51  | 43  | 37  | 50  | 42  | 37  | 48  | 41  | 36  | 46  | 40  | 36  | 34 | 34 | 34 | 34 |
| 8  | 61  | 48  | 39  | 34  | 59  | 47  | 39  | 33  | 45  | 38  | 33  | 44  | 37  | 33  | 43  | 37  | 32  | 30 | 30 | 30 | 30 |
| 9  | 57  | 44  | 36  | 30  | 56  | 43  | 35  | 30  | 42  | 35  | 30  | 41  | 34  | 30  | 39  | 34  | 29  | 27 | 27 | 27 | 27 |
| 10 | 54  | 40  | 33  | 28  | 52  | 40  | 32  | 27  | 39  | 32  | 27  | 38  | 31  | 27  | 37  | 31  | 27  | 25 | 25 | 25 | 25 |

### Zonal Lumen Summary

| Zone    | Lumens   | %Lamp | %Fixt  |
|---------|----------|-------|--------|
| 0-20    | 2091.37  | N.A.  | 13.70  |
| 0-30    | 4392.26  | N.A.  | 28.70  |
| 0-40    | 7081.78  | N.A.  | 46.30  |
| 0-60    | 12047.92 | N.A.  | 78.70  |
| 0-80    | 14652.39 | N.A.  | 95.80  |
| 0-90    | 14922.37 | N.A.  | 97.50  |
| 10-90   | 14377.93 | N.A.  | 94.00  |
| 20-40   | 4990.42  | N.A.  | 32.60  |
| 20-50   | 7660.38  | N.A.  | 50.10  |
| 40-70   | 6640.53  | N.A.  | 43.40  |
| 60-80   | 2604.47  | N.A.  | 17.00  |
| 70-80   | 930.07   | N.A.  | 6.10   |
| 80-90   | 269.98   | N.A.  | 1.80   |
| 90-110  | 159.35   | N.A.  | 1.00   |
| 90-120  | 224.87   | N.A.  | 1.50   |
| 90-130  | 278.54   | N.A.  | 1.80   |
| 90-150  | 349.58   | N.A.  | 2.30   |
| 90-180  | 380.35   | N.A.  | 2.50   |
| 110-180 | 221.00   | N.A.  | 1.40   |
| 0-180   | 15302.72 | N.A.  | 100.00 |

Total Luminaire Efficiency = N.A. %

### Average Luminance candelas/square meter (cd/sq.m)

| Angle In Degrees | Average 0-Deg | Average 45-Deg | Average 90-Deg |
|------------------|---------------|----------------|----------------|
| 45               | 74205         | 66677          | 65051          |
| 55               | 67501         | 58054          | 55694          |
| 65               | 60232         | 47918          | 44695          |
| 75               | 52168         | 35229          | 30270          |
| 85               | 41658         | 16454          | 9197           |



# Q Series High Bay - 4'

## Applications

The Q Series High Bay family is a versatile solution for endless applications. With a lightweight extruded aluminum body and included mounting hardware, the Q Series QHB by TCP is quick to install and will provide a long-lasting durable light source for years to come.

## Features

- Lightweight, quick install construction
- Standard frosted lens for glare control
- No shadows for smooth, even lighting
- Damp location rated
- 0-10V smooth, no-flicker dimming
- Operating temperature: -4°F to 122°F
- 250W or 400W HID equivalent
- Long 50,000 hour rated life
- LED design provides wide beam spread and clean cutoff
- Optional battery backup and motion sensors available
- Includes 6-foot power cord

## Hardware Included

- 2 tong hangers
- 5' jack chains
- 6' pre-wired cord

|             |      |
|-------------|------|
| Item Number |      |
| Notes       | Type |



### Listings

cULus Listed  
RoHS Compliant  
DLC 5.1 Standard

### Warranty

Five year limited warranty against defects in manufacturing.

## Installation

Before hanging installation, please consult your local ordinances and building codes.

## Catalog Ordering Matrix Example: QHB4UZDA450K

| FAMILY                         | LENGTH            | VOLTAGE                                    | CONTROLS                  | LUMEN PACKAGE (Power) <sup>1,2</sup>  | CCT <sup>4</sup>                         | FACTORY INSTALLED OPTIONS <sup>3</sup>                | FACTORY INSTALLED CONTROLS   |
|--------------------------------|-------------------|--|---------------------------|---|--|---|--|
| <b>QHB</b> - Q Series High Bay | <b>4</b> - 4 foot | <b>U</b> - 120-277V<br><b>H</b> - 347-480V | <b>ZD</b> - 0-10V Dimming | <b>B2</b> - 15,100L (110W) <sup>5,6</sup><br><b>A4</b> - 30,500L (220W)<br><b>A6</b> - 44,550L (330W)<br><b>A8</b> - 60,000L (440W) | <b>40K</b> - 4000K<br><b>50K</b> - 5000K | <b>Blank</b> - No Add-on<br><b>B</b> - Battery Backup | <b>Blank</b> - No controls<br><b>MS1</b> - Microwave Motion Sensor 120-277V<br><b>LS1</b> - PIR Motion Sensor 120V, 277V or 347V<br><b>LS1D</b> - PIR Motion/Daylight Sensor 120V, 277V or 347V<br><b>LS4</b> - PIR Motion Sensor 240V or 480V<br><b>SM</b> - SmartBox with Microwave Sensor |

<sup>1</sup> Approximate lumen output. Actual performance may vary based on CCT, options selected and end use application

<sup>2</sup> Actual wattage may differ by +/- 10%

<sup>3</sup> Battery backup outputs 3,000L when in use

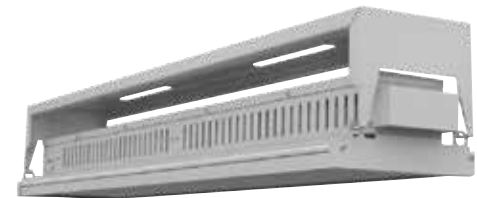
<sup>4</sup> Other CCT available special order. Longer lead times will apply

<sup>5</sup> QHB4 B2 lumen package is not compatible with any of the listed controls

<sup>6</sup> Battery backup not available on 110W

## Field Installed Accessories

- QHB4WGUARD1 - Wire Guard for 220W Model
- QHB4WGUARD2 - Wire Guard for 330W-440W Models
- QHB4SMOUNT1 - 220W Surface Mount Kit
- QHB4SMOUNT2 - 330W-440W Surface Mount Kit
- ISREMOTE - Remote for Integrated Sensor



**QHB4SMOUNT1/QHB4SMOUNT2 Surface Mount Kit**  
(Shown on QHB4UZDA450K)



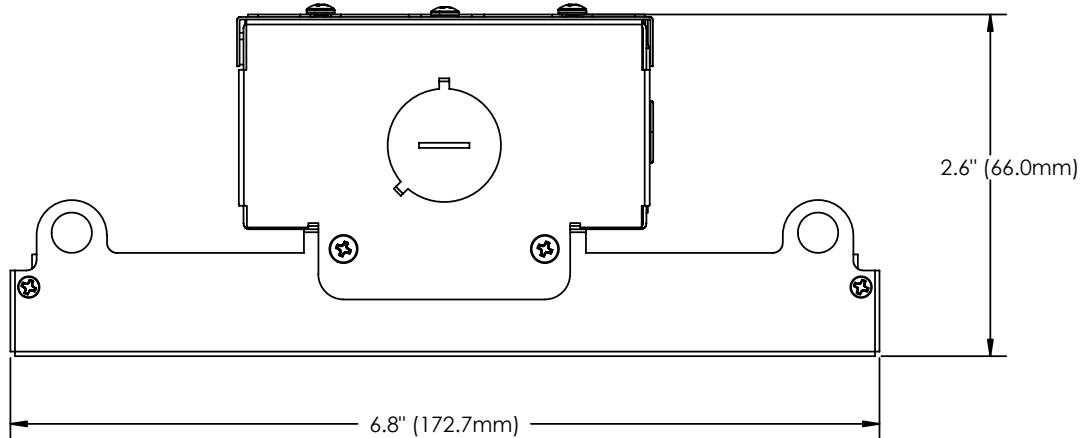
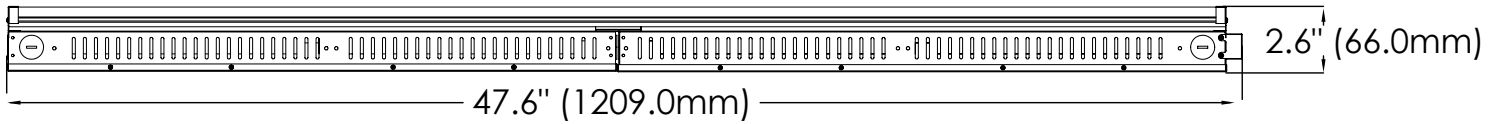
**5 YEAR**  
WARRANTY

TCP®

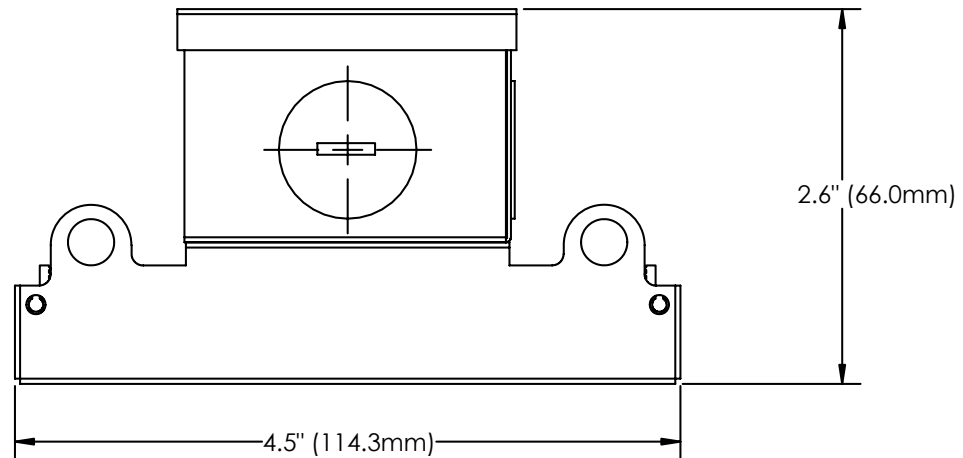
325 Campus Dr. | Aurora, Ohio 44202 | P: 800-324-1496 | tcp.com

Not all versions of this product are qualified on the DLC QPL. To view our DLC qualified products, please consult the DLC Qualified Products List at [www.designlights.org/apl](http://www.designlights.org/apl).

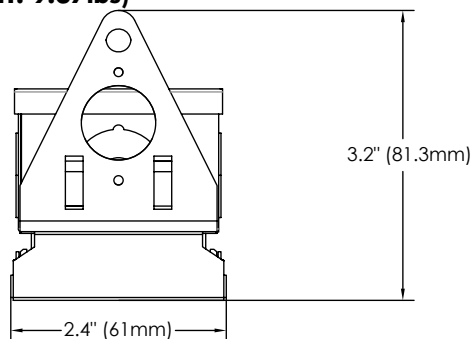
## Wireline Dimensions



**QHB4UZDA650K (WEIGHT: 12.35lbs) & QHB4UZDA850K (WEIGHT: 14.33lbs)**



**QHB4UZDA450K (WEIGHT: 9.37lbs)**



**QHB4UZDB250K (WEIGHT: 5.5lbs)**



## Photometric Report

### Spacing Criterion

#### QHB4UZDA8XXK

|                            |      |
|----------------------------|------|
| Spacing Criterion (0-180)  | 1.18 |
| Spacing Criterion (90-270) | 1.28 |

#### QHB4UZDA6XXK

|                            |      |
|----------------------------|------|
| Spacing Criterion (0-180)  | 1.20 |
| Spacing Criterion (90-270) | 1.26 |

#### QHB4UZDA4XXK

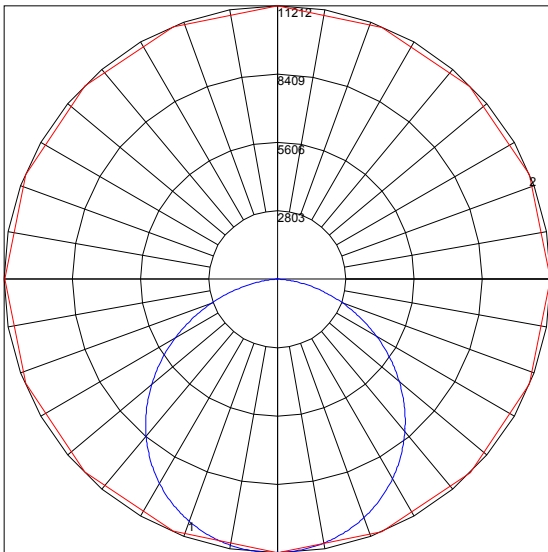
|                            |      |
|----------------------------|------|
| Spacing Criterion (0-180)  | 1.24 |
| Spacing Criterion (90-270) | 1.26 |

#### QHB4UZDA2XXK

|                            |      |
|----------------------------|------|
| Spacing Criterion (0-180)  | 1.14 |
| Spacing Criterion (90-270) | 1.26 |

Based on photometric data for  
TCP Item # QHB4UZDA450K

### Polar Graph



Maximum Candela = 11211.84 Located At Horizontal Angle = 270, Vertical Angle = 1.5  
# 1 - Vertical Plane Through Horizontal Angles (270 - 90) (Through Max. Cd.)  
# 2 - Horizontal Cone Through Vertical Angle (1.5) (Through Max. Cd.)

### Coefficients of Utilization – Zonal Cavity Method

#### Effective Floor Cavity Reflectance 0.20

| RC | 80  |     |     |     | 70  |     |     |     | 50  |     |     |     | 30  |     |     |     | 10  |    |    |    | 0  |
|----|-----|-----|-----|-----|-----|-----|-----|-----|-----|-----|-----|-----|-----|-----|-----|-----|-----|----|----|----|----|
| RW | 70  | 50  | 30  | 10  | 70  | 50  | 30  | 10  | 50  | 30  | 10  | 50  | 30  | 10  | 50  | 30  | 10  | 50 | 30 | 10 | 0  |
| 0  | 119 | 119 | 119 | 119 | 116 | 116 | 116 | 116 | 111 | 111 | 111 | 106 | 106 | 106 | 101 | 101 | 101 | 99 | 99 | 99 | 99 |
| 1  | 109 | 104 | 100 | 96  | 106 | 102 | 98  | 94  | 97  | 94  | 91  | 93  | 91  | 88  | 89  | 87  | 86  | 83 | 83 | 83 | 83 |
| 2  | 99  | 91  | 84  | 79  | 96  | 89  | 83  | 78  | 85  | 80  | 76  | 82  | 78  | 74  | 79  | 75  | 72  | 70 | 70 | 70 | 70 |
| 3  | 90  | 80  | 72  | 66  | 88  | 78  | 71  | 65  | 75  | 69  | 64  | 72  | 67  | 62  | 70  | 65  | 61  | 59 | 59 | 59 | 59 |
| 4  | 83  | 71  | 62  | 56  | 80  | 70  | 61  | 55  | 67  | 60  | 54  | 65  | 58  | 54  | 62  | 57  | 53  | 51 | 51 | 51 | 51 |
| 5  | 76  | 63  | 55  | 48  | 74  | 62  | 54  | 48  | 60  | 53  | 47  | 58  | 52  | 47  | 56  | 50  | 46  | 44 | 44 | 44 | 44 |
| 6  | 70  | 57  | 48  | 42  | 68  | 56  | 48  | 42  | 54  | 47  | 41  | 53  | 46  | 41  | 51  | 45  | 40  | 38 | 38 | 38 | 38 |
| 7  | 65  | 52  | 43  | 37  | 64  | 51  | 43  | 37  | 49  | 42  | 37  | 48  | 41  | 36  | 46  | 41  | 36  | 34 | 34 | 34 | 34 |
| 8  | 61  | 47  | 39  | 33  | 59  | 47  | 39  | 33  | 45  | 38  | 33  | 44  | 37  | 33  | 43  | 37  | 32  | 30 | 30 | 30 | 30 |
| 9  | 57  | 44  | 35  | 30  | 55  | 43  | 35  | 30  | 42  | 35  | 30  | 41  | 34  | 29  | 39  | 34  | 29  | 27 | 27 | 27 | 27 |
| 10 | 53  | 40  | 32  | 27  | 52  | 40  | 32  | 27  | 39  | 32  | 27  | 38  | 31  | 27  | 37  | 31  | 27  | 25 | 25 | 25 | 25 |

### Zonal Lumen Summary

| Zone    | Lumens   | %Lamp | %Fixt  |
|---------|----------|-------|--------|
| 0-20    | 4085.91  | N.A.  | 13.40  |
| 0-30    | 8642.5   | N.A.  | 28.30  |
| 0-40    | 14055.31 | N.A.  | 46.00  |
| 0-60    | 24310.29 | N.A.  | 79.50  |
| 0-80    | 29758.37 | N.A.  | 97.30  |
| 0-90    | 30283.78 | N.A.  | 99.10  |
| 10-90   | 29924.94 | N.A.  | 95.60  |
| 20-40   | 9969.4   | N.A.  | 32.60  |
| 20-50   | 15444.02 | N.A.  | 50.50  |
| 40-70   | 13766.65 | N.A.  | 45.00  |
| 60-80   | 5448.08  | N.A.  | 17.80  |
| 70-80   | 1936.42  | N.A.  | 6.30   |
| 80-90   | 525.41   | N.A.  | 1.70   |
| 90-110  | 113.04   | N.A.  | 0.40   |
| 90-120  | 162.41   | N.A.  | 0.50   |
| 90-130  | 204.40   | N.A.  | 0.70   |
| 90-150  | 262.56   | N.A.  | 0.90   |
| 90-180  | 288.95   | N.A.  | 0.90   |
| 110-180 | 175.90   | N.A.  | 0.60   |
| 0-180   | 30582.73 | N.A.  | 100.00 |

Total Luminaire Efficiency = N.A. %

### Average Luminance candelas/square meter (cd/sq.m)

| Angle In Degrees | Average 0-Deg | Average 45-Deg | Average 90-Deg |
|------------------|---------------|----------------|----------------|
| 45               | 65018         | 60624          | 61094          |
| 55               | 59688         | 53883          | 54434          |
| 65               | 53476         | 45458          | 45280          |
| 75               | 45231         | 33546          | 32163          |
| 85               | 33780         | 15034          | 10786          |

Specifications and dimensions subject to change without notice.

TCP®

325 Campus Dr. | Aurora, Ohio 44202 | P: 800-324-1496 | tcp.com

©TCP SEP 2024/WF251602



5 YEAR WARRANTY

Not all versions of this product are qualified on the DLC QPL. To view our DLC qualified products, please consult the DLC Qualified Products List at [www.designlights.org/apl](http://www.designlights.org/apl).

# TECHNOLOGY CAST IN A BEAUTIFUL LIGHT

For over 30 years, TCP has been designing, developing and delivering energy-efficient lighting into the market. Thanks to our cutting-edge technology and manufacturing expertise, we have shipped billions of high quality lighting products. With TCP, you can count on a lighting product that is designed to meet the needs of the market - that transforms your surroundings and envelopes you in warmth - lighting that generates beauty with every flip of the switch.

Sales:

Date:

Model:

Project:

Rep:

Catalog Number:

Type:

Notes:



For more information on the quality and care TCP can deliver, call us at **800.324.1496** or visit [tcpi.com](http://tcpi.com)

325 Campus Dr. | Aurora, Ohio 44202 | P: 800.324.1496 | F: 877.487.0516