

## LED Architectural Strip Light

### Product Specifications



TCP's Architectural Strip Light combines elegant lighting design with field customization to perfectly illuminate any space. These architectural strips will draw people into the space and create an atmosphere where they want to spend time.

Hang each light individually or connect them end-to-end. 90° and straight linking options allow for limitless creative configurations.

### Reasons to choose the LED Architectural Strip Lights from TCP

- 1450/1600/1800L uplight eliminates cave effect
- 50,000 hour rated life minimizes replacements and labor costs
- Connect in any straight or 90° configuration
- 0-10V dimming driver comes standard for smooth, continuous dimming
- Fast coupler link for easy, time-saving installation
- Enhance the atmosphere in any space

### Ideal Applications

- Lobbies
- Meeting Rooms
- Banquet Halls
- Waiting Areas
- Offices
- Restaurants
- Galleries

## Specifications

Wattage.....	40W/45W/50W
Down Lumens.....	3350L/3800L/4200L
Up Lumens.....	1450L/1600L/1800L
Color Temperature (CCT).....	3500K/4100K/5000K
Dimming.....	0-10V (standard)
Input Line Voltage .....	120-277V
Rated Life.....	>50,000 hours
CRI.....	>83
Power Factor .....	>.95

## Warranty

Five year limited warranty against defects in manufacturing



## Applications

TCP's Architectural Strip Lights deliver beautifully designed light that transforms the space it occupies. They feature a long 50,000 hour life, low maintenance, and are perfect for office spaces, waiting areas, and banquet halls.

## Construction

- Visually appealing slim, low-profile design
- Heavy-duty aluminum housing
- Durable black powder coat finish
- Suspended mount kit included in the box
- Straight connector included in the box

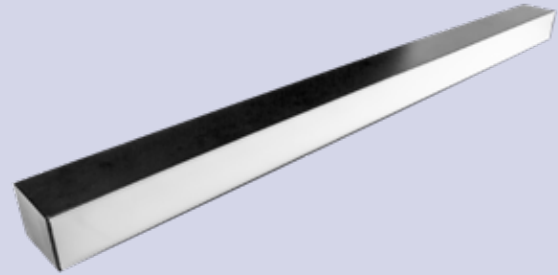
## Electrical

- Universal 120-277V
- 0-10V dimming (standard)
- Long 50,000 hour rated life
- cULus damp location rated

## Optics

- Durable ribbed, frosted white diffuser lens
- Glare-free light distribution

Item Number	
Notes	Type



### Listings

cULus Listed – damp location rated  
RoHS Compliant  
DLC 5.1 Listed

### Warranty

Five year limited warranty against defects in manufacturing

### Installation

Suspended

Before installation, please consult your local ordinances and building codes for compliance

## Catalog Ordering Matrix

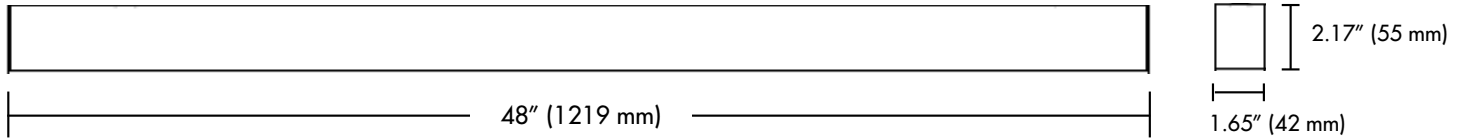
Example: ARC4UZDA4CCT

FAMILY	LENGTH	VOLTAGE	CONTROLS	DOWN LUMEN PACKAGE (POWER) <sup>1,2</sup>	COLOR TEMPERATURE	OPTIONS
ARC - TCP Architectural Strip	4 - 4 ft.	U - 120-277V	ZD - 0-10V Dimming	A4 - 40W/45W/50W Selectable UP 1450L/1600L/1800L DOWN 3350L/3800L/4200L	CCT - Selectable CCT 3500/4100/5000K	Blank - Black WH - White

<sup>1</sup> Approximate lumen output. Actual performance may vary based on CCT, options selected and end user application

<sup>2</sup> Actual wattage may differ by +/- 10%

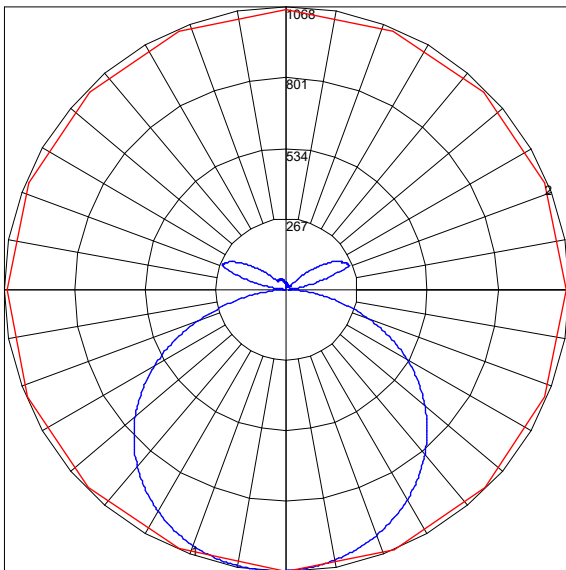
## Dimensions



## Photometric Report

Based on TCP Item # ARC4UZDA4CCT  
set at 50 Watts and 3500K - DOWNLIGHT ONLY

### Polar Graph



Maximum Candela = 1068.3 Located At Horizontal Angle = 270, Vertical Angle = 4.5  
# 1 - Vertical Plane Through Horizontal Angles (270-90) (Through Max. Cd.)  
# 2 - Horizontal Cone Through Vertical Angle (4.5) (Through Max. Cd.)

### Characteristics

Luminaire Lumens	5024
Total Luminaire Efficiency	100 %
Total Luminaire Watts	49.5167
Ballast Factor	1.00
CIE Type	Semi-Direct
Spacing Criterion (0-180)	1.26
Spacing Criterion (90-270)	1.30
Spacing Criterion (Diagonal)	1.42
Basic Luminous Shape	Point

## Coefficients of Utilization – Zonal Cavity Method

### Effective Floor Cavity Reflectance 0.20

RC	80				70				50				30				10				0
RW	70	50	30	10	70	50	30	10	50	30	10	50	30	10	50	30	10	50	30	10	0
0	111	111	111	111	104	104	104	104	91	91	91	80	80	80	69	69	69	64	64	64	0
1	101	96	92	88	94	90	87	84	80	77	74	70	68	66	61	59	58	53	53	53	53
2	91	84	77	72	85	79	73	68	69	65	61	61	57	54	53	50	48	44	44	44	44
3	83	73	65	59	78	69	62	56	61	55	51	53	49	46	47	43	41	37	37	37	37
4	76	65	56	50	71	61	53	48	54	48	43	47	43	39	41	38	35	31	31	31	31
5	70	57	49	43	65	54	46	41	48	42	37	42	37	33	37	33	30	27	27	27	27
6	64	51	43	37	60	49	41	35	43	37	32	38	33	29	34	29	26	24	24	24	24
7	59	46	38	32	55	44	36	31	39	33	28	35	30	26	31	26	23	21	21	21	21
8	55	42	34	28	51	40	32	27	36	29	25	32	27	23	28	24	21	18	18	18	18
9	51	38	31	25	48	36	29	24	33	27	22	29	24	20	26	22	19	16	16	16	16
10	48	35	28	23	45	34	27	22	30	24	20	27	22	19	24	20	17	15	15	15	15

## Zonal Lumen Summary

Zone	Lumens	%Lamp	%Fixt
0-20	391.33	7.80	7.80
0-30	837.30	16.70	16.70
0-40	1385.14	27.60	27.60
0-60	2505.18	49.90	49.90
0-80	3162.77	63.00	63.00
0-90	3224.2	64.20	64.20
10-90	3123.45	62.20	62.20
20-40	993.82	19.80	19.80
20-50	1575.42	31.40	31.40
40-70	1538.68	30.60	30.60
60-80	657.58	13.10	13.10
70-80	238.94	4.80	4.80
80-90	61.44	1.20	1.20
90-110	166.86	3.30	3.30
90-120	443.86	8.80	8.80
90-130	757.42	15.10	15.10
90-150	1397.79	27.80	27.80
90-180	1799.43	35.80	35.80
110-180	1632.58	32.50	32.50
180	5023.64	100.00	100.00

Total Luminaire Efficiency = 100.00%

# TECHNOLOGY CAST IN A BEAUTIFUL LIGHT

For over 30 years, TCP has been designing, developing and delivering energy-efficient lighting into the market. Thanks to our cutting-edge technology and manufacturing expertise, we have shipped billions of high quality lighting products. With TCP, you can count on a lighting product that is designed to meet the needs of the market - that transforms your surroundings and envelopes you in warmth - lighting that generates beauty with every flip of the switch.

Sales:

Date:

Model:

Project:

Rep:

Catalog Number:

Type:

Notes:



For more information on the quality and care TCP can deliver, call us at **800.324.1496** or visit [tcpi.com](http://tcpi.com)

325 Campus Dr. | Aurora, Ohio 44202 | P: 800.324.1496 | F: 877.487.0516