



# LED Security Light

## Product Specifications



TCP's LED Security Light combines the look of a traditional barn light with the benefits of LED. An efficient alternative to HID, these security lights deliver bright uniform light while providing energy savings. A long 50,000 hour rated life significantly decreases maintenance labor and material costs over the life of the fixture.

The robust die-cast aluminum housing incorporates an impact resistant acrylic lens. An integrated button photocell is standard for dusk-to-dawn control. The security light mounts directly to a wall or horizontal arm up to 1 5/8" O.D. for easy installation or retrofit of traditional luminaires.

### Reasons to choose the LED Security Light from TCP

---

- Long 50,000 hour rated life minimizes replacements and labor costs
- Efficiently delivers up to 144 LPW
- Impact resistant acrylic lens
- Die-cast aluminum housing
- UL approved for wet locations
- Mounts to a wall or horizontal arm up to 1 5/8" O.D.

### Ideal Applications

---

- Site Lighting
- Security Lighting
- Entrances
- Perimeters



## Applications

This product family can be effectively used in outdoor wall mount or horizontal arm mount locations. Applications include commercial, industrial, and rural exterior lighting; parking lots, cargo doors, high wall areas, and security.

## Construction

- Die-cast aluminum housing
- Impact resistant acrylic lens
- Durable dark bronze powder coat
- Mounts to a wall or horizontal arm up to 2 3/8" O.D.

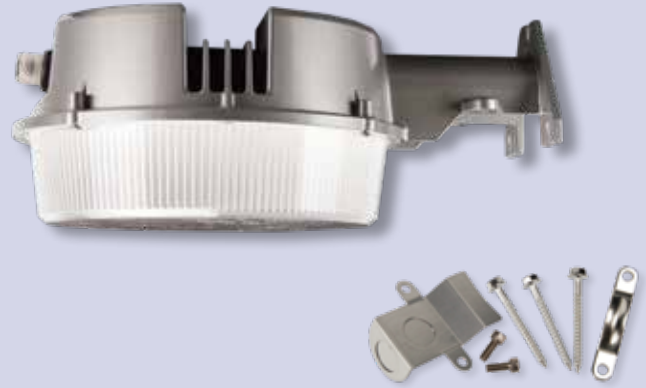
## Electrical

- cULus wet location rated
- Easily access wiring for quick installation
- System rated for long 50,000 hour life
- Efficiently delivers up to 140 LPW

## Optics

- Prismatic acrylic lens
- Delivers bright, white light and excellent uniformity

Item Number	
Notes	Type



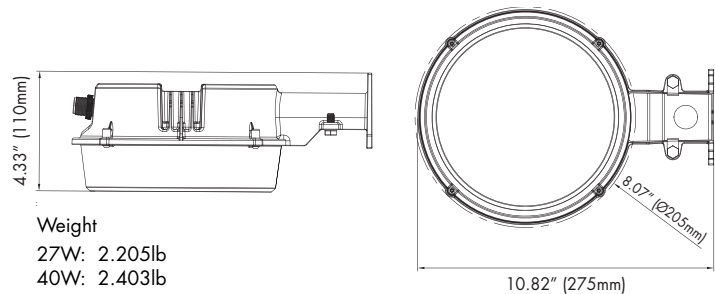
### Listings

cULus Listed – wet location rated  
RoHS Compliant

### Warranty

Five year limited warranty against defects in manufacturing

## Dimensions



## LED Security Light

Item #	Description	DLC	LUMENS	WATTAGE	LPW	VOLTAGE	POWER FACTOR	CCT	CRI	LIFE (HRS)	L (IN)	H (IN)	W (IN)
RSLUA140KPCSV	LED Security Light Non Dim Button PC 40K	Yes	3,800	27	141	120 - 277	> 0.9	4000K	>70	50,000	10.82	4.33	8.07
RSLUA150KPCSV	LED Security Light Non Dim Button PC 50K	Yes	3,900	27	144	120 - 277	> 0.9	5000K	>70	50,000	10.82	4.33	8.07
RSLUA240KPCSV	LED Security Light Non Dim Button PC 40K	Yes	5,500	40	138	120 - 277	> 0.9	4000K	>70	50,000	10.82	4.33	8.07
RSLUA250KPCSV	LED Security Light Non Dim Button PC 50K	Yes	5,700	40	143	120 - 277	> 0.9	5000K	>70	50,000	10.82	4.33	8.07

For the most up-to-date specs and warranty information, please visit [www.tcp.com](http://www.tcp.com)

# TECHNOLOGY CAST IN A BEAUTIFUL LIGHT

For over 20 years, TCP has been designing, developing and delivering energy-efficient lighting into the market. Thanks to our cutting-edge technology and manufacturing expertise, we have shipped billions of high quality lighting products. With TCP, you can count on a lighting product that is designed to meet the needs of the market - that transforms your surroundings and envelopes you in warmth - lighting that generates beauty with every flip of the switch.

Sales:

Date:

Model:

Project:

Rep:

Catalog Number:

Type:

Notes:



For more information on the quality and care TCP can deliver, call us at **800.324.1496** or visit [tcp.com](http://tcp.com)

325 Campus Dr. | Aurora, Ohio 44202 | P: 800.324.1496 | F: 877.487.0516