



# QGP General Purpose Strip

## Product Specifications



The QGP General Purpose Strip features a lightweight extruded aluminum body while maintaining a durable construction, a classic 4FT length, and up to 7,425 lumen output. With an efficiency of 135 lumens per watt, the QGP is designed to deliver a robust performance while maximizing energy savings.

TCP's Quick Connect System has been incorporated into the design standard. This allows for beautiful long continuous runs of light without the need for extra parts or accessories. The Quick Connect System does not stop with an efficient mechanical connection. The QGP General Purpose Strip also offers Quick Connect daisy chain 5-wire cable accessories.

## Reasons to choose the QGP General Purpose Strip from TCP

- TCP Quick Connect System
- Lightweight extruded body for easy install

## Ideal Applications

- High ceilings
- Commercial settings
- Industrial settings
- Retail
- Warehouses
- Architectural settings



# QGP General Purpose Strip

## Specifications

Input Line Voltage.....	120-277 VAC
Input Line Frequency (Hz).....	50/60HZ
Wattage (W).....	35W/45W/55W
Lumens (L).....	4725L/6075L/7425L
Lumens per Watt (LPW).....	>135 LPW (80CRI)
Rated Life.....	50,000 hours
Minimum Starting Temperature.....	-20°C (-4°F)
Maximum Operating Temperature.....	50°C (122°F)
CRI.....	>80
Power Factor.....	>0.95
THD.....	<20%
Ratings.....	cULus, damp location rated
Controls.....	0-10V dimming (standard)

## Features

- Lightweight, quick install construction
- Standard frosted lens for glare control
- No shadows; smooth, even lighting
- Damp location rated
- 0-10V smooth, no-flicker dimming
- Operating temperature: -4°F to 122°F
- TCP Quick Connect System
- Long 50,000 hour rated life
- Wide beam spread due to angled LED design providing clean cut off
- Optional battery backup, and motion sensor accessories available



### Listings

cULus Listed  
RoHS Compliant  
DLC 5.1 Standard

### Warranty

Five year limited warranty against defects in manufacturing.

## Hardware Included

- Cable Hang Kit
- TCP's Quick Connect System

## Installation

Suspended installation. Before installation, please consult your local ordinances and building codes.

## Catalog Ordering Matrix Example: QGP4UZDA250K

QGP	4	U	ZD	A2	50K	
FAMILY	LENGTH	VOLTAGE	CONTROLS	LUMEN PACKAGE (Power) <sup>1, 2</sup>	CCT	Factory Installed Options
<b>QGP</b> - QGP General Purpose Strip	<b>4</b> - foot	<b>U</b> - 120-277V	<b>ZD</b> - 0-10V Dimming	<b>A2</b> - 4725L (35W) <b>A3</b> - 6075L (45W) <b>A4</b> - 7425L (55W)*	<b>40K</b> - 4000K CCT <b>50K</b> - 5000K CCT	<b>Blank</b> - No Add-on <b>B</b> - Battery Backup

<sup>1</sup> Approximate lumen output. Actual performance may vary based on CCT, options selected and end use application.

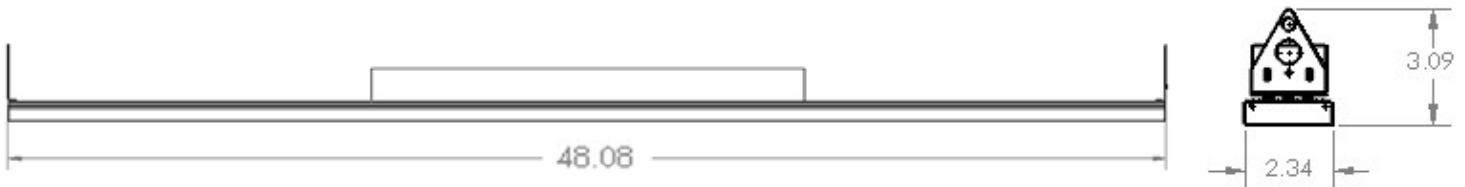
<sup>2</sup> Actual wattage may differ by +/- 10%  
\*55W Model is selectable: 35/45/55W

## Field Installed Accessories

- Q5DAISY4FT - TCP's Quick Connect System

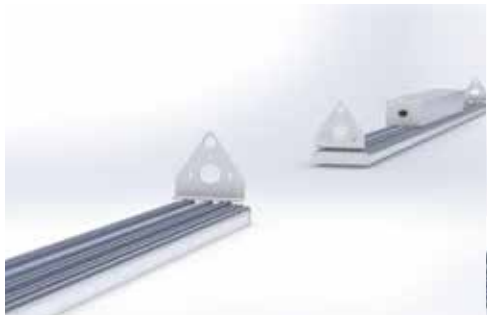


## Wireline Dimensions



## TCP Quick Connect System

Step 1:



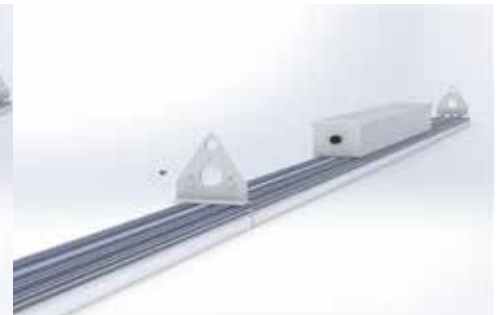
Align male and female ends of the Quick Connect triangles

Step 2:



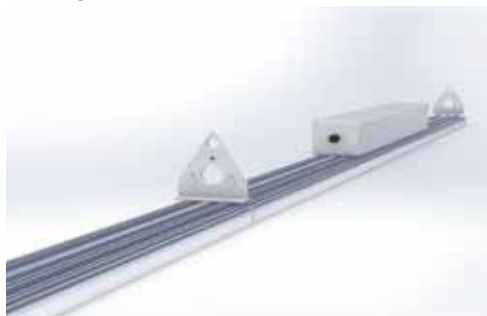
Slide together to fasten

Step 3:



Fasten locking screw until tight

Step 4:



Mechanical connection complete

Step 5:



Use Q5DAISY4FT Quick Connect cable to daisy chain units together

**NOTE:**

Electrical Daisy Chain Capabilities using Q5DAISY4FT:  
55W model = 15 units in series

# TECHNOLOGY CAST IN A BEAUTIFUL LIGHT

For over 20 years, TCP has been designing, developing and delivering energy-efficient lighting into the market. Thanks to our cutting-edge technology and manufacturing expertise, we have shipped billions of high quality lighting products. With TCP, you can count on a lighting product that is designed to meet the needs of the market - that transforms your surroundings and envelopes you in warmth - lighting that generates beauty with every flip of the switch.

Sales:

Date:

Model:

Project:

Rep:

Catalog Number:

Type:

Notes:



For more information on the quality and care TCP can deliver, call us at **800.324.1496** or visit [tcp.com](http://tcp.com)

325 Campus Dr. | Aurora, Ohio 44202 | P: 800.324.1496 | F: 877.487.0516