

SmartStuff SmartBox + Fixture Sensor

Item Number: **SMBOXFXBT**

Product Specifications



The SmartBox + Fixture Sensor is a Bluetooth® Signal Mesh based lighting control device. Once connected to a luminaire, the SmartBox + Fixture Sensor provides Motion and Light Sensor Controls. The Fixture Sensor incorporates a microwave sensor that detects motion through nonmetallic objects and a light sensor to measure the ambient light in the area. The SmartBox + Fixture Sensor is compatible with any luminaire with 0-10V dim to off drivers/ballast and can be configured through the TCP SmartStuff App on any Android™ or Apple® Smart devices.

Reasons to choose the TCP SmartBox Lighting Controls

- TCP Bluetooth Signal Mesh allows up to 100 units to be controlled simultaneously as a group
- Control luminaires with 0-10V dim to off drivers/ballast
- Able to create scenes, schedules, and group TCP SmartStuff products together
- Pair with TCP SmartStuff Accessories for greater control and flexibility
- Easy to install, setup, and configure through the TCP SmartStuff App
- All TCP SmartStuff products' firmware can be updated through the SmartStuff App to enhance their capabilities and fix potential issues

Ideal Applications

- Linear Low Bays
- Commercial Downlights
- General Purpose Strips

Specifications

Input Voltage 120 - 277VAC @ 30mA
Input Line Frequency..... 50/60Hz
Maximum Wattage..... 2W
Output Voltage..... 0-10VDC

Radio Protocol Bluetooth Signal Mesh
Operating Temperature..... -23°F(-30°C) to 113°F(45°C)
Humidity..... <80% RH
Suitable for both dry and damp locations



5 YEAR
WARRANTY

TCP®

325 Campus Dr. | Aurora, Ohio 44202 | P: 800-324-1496 | tcp.com



SmartStuff SmartBox + Fixture Sensor

Item Number: **SMBOXFXBT**

SmartBox + Fixture Sensor Setting

Hold Time Presets* 15s, 30s, 60s, 120s, 300s
Daylight Sensor Setpoint 200 lux
Microwave Maximum Height..... 30ft/10m

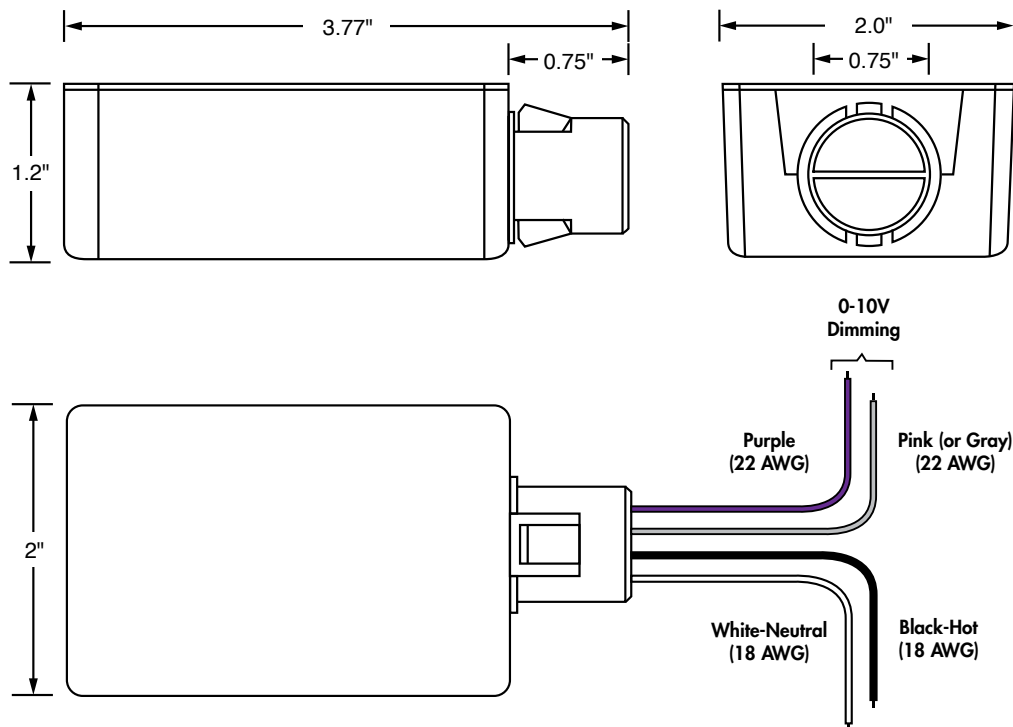
Microwave Maximum Diameter 26ft/8m
Detection Angle 360°

*Note: Changing the Hold Time Presets are done through the TCP SmartStuff App.

Regulatory Approvals

- ETL Listed
- FCC ID:NIR-SMBOXFXBT
- IC:9486A-SMBOXFXBT
- Conforms to UL 8750
- Certified to CSA C22.2 No. 250.13

Dimensions



TCP SmartStuff App

The TCP SmartStuff App is used to configure the Bluetooth Signal Mesh and TCP SmartStuff devices. Download now from the Apple App Store or Google Play Store.



Instructions for configuring TCP SmartStuff App and SmartStuff devices are at <http://www.tcpi.com/smartstuff>



5 YEAR
WARRANTY

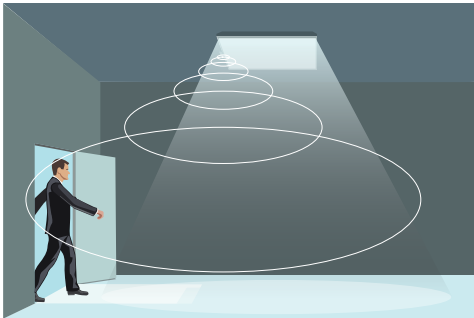
TCP®

325 Campus Dr. | Aurora, Ohio 44202 | P: 800-324-1496 | tcpi.com

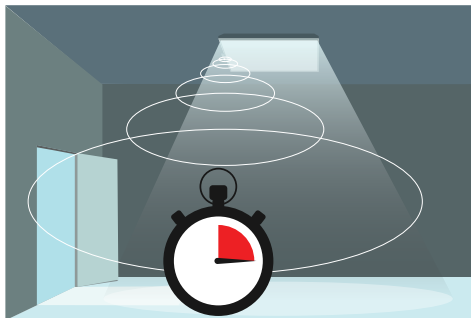
SmartBox + Fixture Control Setting

TCP MOTION CONTROL

When the TCP SmartBox + Fixture Sensor is connected to a luminaire and set up for motion control through the App, the luminaire will turn on/off when the Fixture Sensor detects motion in the area.



If the SmartBox + Fixture Sensor detects motion, it will go into Hold Mode. The light level for the luminaire is determined by the Hold Dimming Level (0-100%).



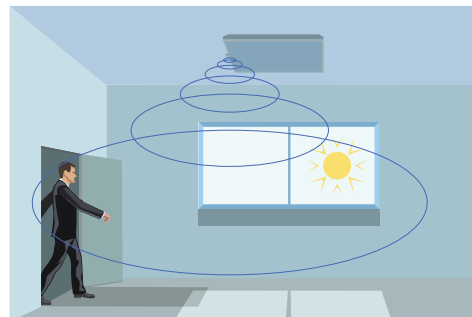
The luminaire will stay on as motion is detected. Once motion is no longer detected, the Hold Time will begin to countdown.



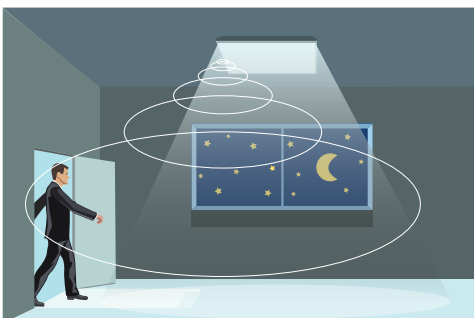
Once the Hold Time has elapsed, the SmartBox + Fixture Sensor will go into Stand-By Mode. The light level for the luminaire is determined by the Stand-By Dimming Level (0-100%).

TCP AMBIENT LIGHT SENSING CONTROL

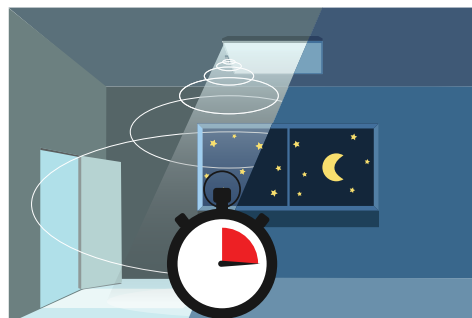
When the TCP SmartBox + Fixture Sensor is connected to a luminaire and set up for ambient light sensing control through the App, the luminaire will turn off when daylight is present and on/off when the Fixture Sensor detects motion in the area.



If the natural light is above 200 lux, the luminaire will not turn on, even if motion is detected.



If the natural light is below 200 lux, the luminaire will turn on when motion is detected. The light brightness is set within the "Collect" tab of the app (0-100%).

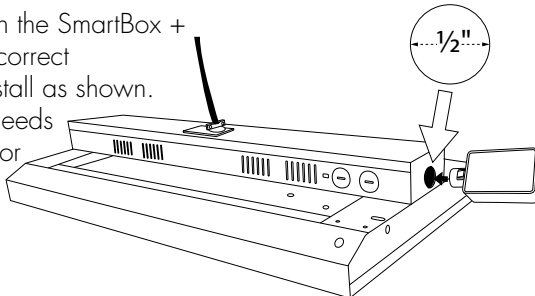


The luminaire will stay on if motion is detected. Once no motion is detected, the Hold Time will begin to countdown. If the natural light is below 200 lux and hold time expires, the sensor will go into Stand-By Mode. The stand-by light brightness is set within the "Collect" tab on the app (0-100%).

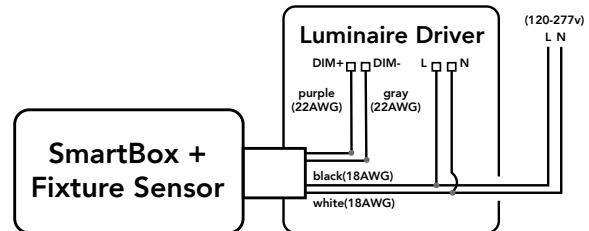
Installation Notes

Installation of the SmartBox + Fixture Sensor (Factory installation is required to guarantee sensor compatibility)

Check the label on the SmartBox + Fixture Sensor for correct orientation and install as shown. The junction box needs a 1/2" knockout for the SmartBox + Fixture Sensor to fit securely.



Make electrical connections as shown.

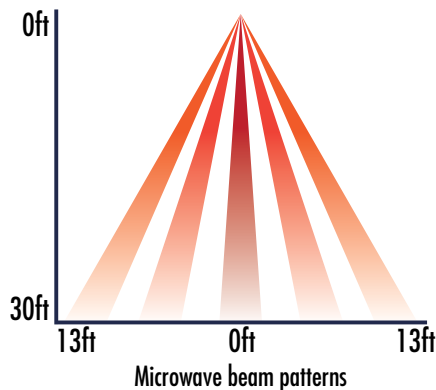


Manual Reset the SmartBox + Fixture Sensor

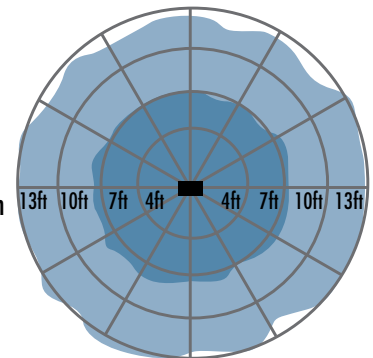
To manually reset the SmartBox + Fixture Sensor that is connected to a luminaire, perform the following steps below:

1. Turn on luminaire.
2. Turn off luminaire within 3 seconds.
3. Repeat steps 1 and 2 five times.
4. Turn on luminaire. After 6 seconds, the luminaire will flicker 5 times and stay on.

Detection Pattern

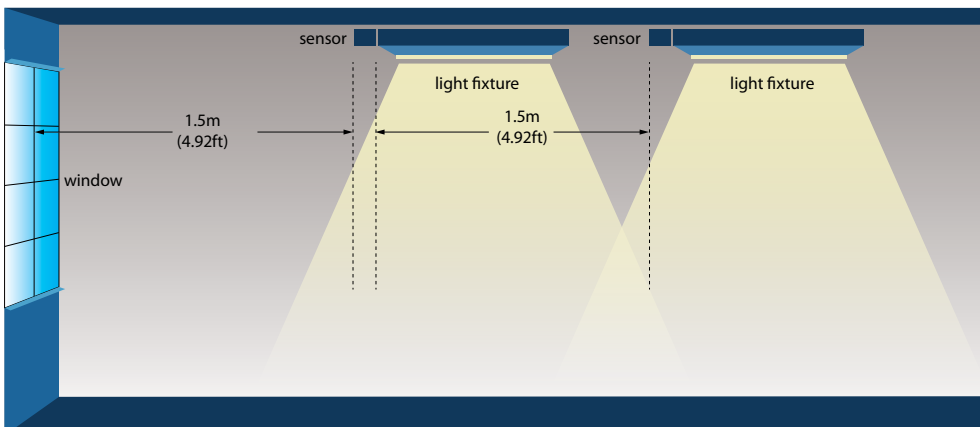


Motion/Occupancy
Setting Detection Pattern



Ceiling Mounting Pattern (Unit: ft)

Sensor Placement



Maintain a minimum distance of 4.92 ft / 1.5m between:

- A window and the SmartBox + Fixture Sensor.
- The SmartBox + Fixture Sensor and other TCP SmartStuff products with a Microwave Sensor.

Make sure no light is reflected in the direction of the SmartBox + Fixture Sensor.

The "Android" name, the Android logo, Google Play and the Google Play logo are trademarks of Google LLC. Apple, the Apple logo, and the App Store are trademarks of Apple Inc., registered in the U.S. and other countries. The Bluetooth® word mark and logos are registered trademarks owned by Bluetooth SIG, Inc. and any use of such marks by TCP is under license.



5 YEAR
WARRANTY