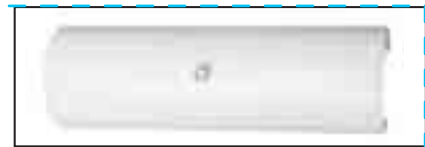




Bath Bar Fixture



1402X13WH Textured White Finish with White Acrylic Diffuser

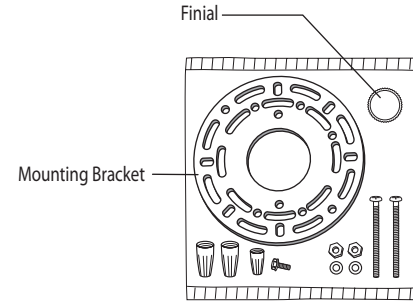
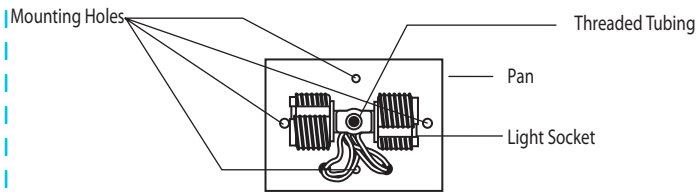


1402X26WH Textured White Finish with White Acrylic Diffuser

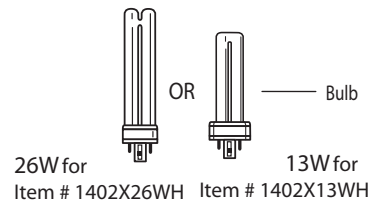
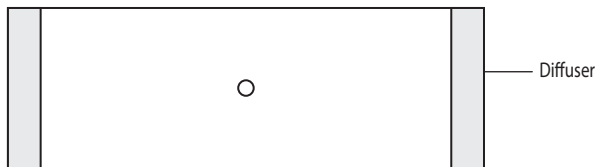
To Begin

WARNING: Review important safety instructions before installation. Check to make sure you have the following:

Installation Time: 45 Minutes.



*Actual hardware may differ from illustration.



REQUIRED

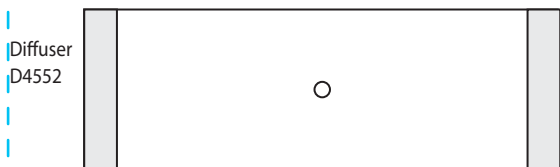


HELPFUL ITEMS

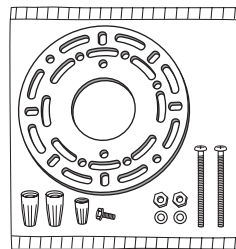


Replacement Parts List

Keep this guide handy for ordering replacement parts.



Hardware kit
HDW4552



Technical Consumer Products, Inc. Warranty

LIMITED WARRANTY

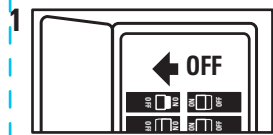
This TCP product is warranted for a period of two years from date of original purchase against defects in materials and workmanship. If this product should fail to operate due to defects in materials or workmanship, simply return this product to the place of purchase or to TCP Service Center (address at right) along with the original sales receipt within two years of purchase. This product will be repaired or replaced, at TCP's option. This warranty is expressly limited to repair or replacement of the product. This warranty gives the consumer specific legal rights, which vary from state to state. Light bulbs are not covered under this warranty.
WARRANTY IS VOID IF PRODUCT IS NOT USED FOR THE PURPOSE FOR WHICH THIS PRODUCT IS MANUFACTURED.

Rev. 10/06 INS4552
©2006 Good Earth Lighting, Inc.
Printed in China
Distributed by:
TCP, Inc. 300 Lena Drive, Aurora, OH 44202

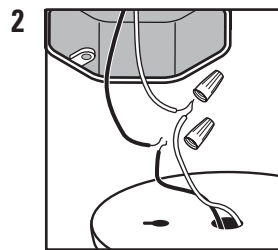
In the event you are missing any parts, or have other questions regarding installation, please call our Customer Service Department at 800-290-5098.

Preparation/Preparación

DO NOT USE THIS FIXTURE WITH A DIMMING CIRCUIT. If you presently have dimmer controls, you will need to remove them, and replace them with regular electrical switches. If you have a three way dimmer, you will have to replace it with a regular three way switch. **If you are unfamiliar with electrical installations, we recommend you have a qualified electrician do your installation.**

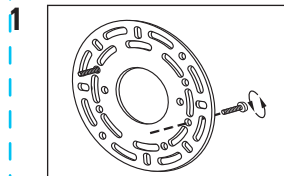


WARNING: Shut off power at the circuit breaker or fuse panel before removing the old fixture.

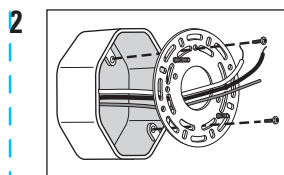


Remove the old fixture. Make yourself a sketch of how the fixture is wired (index the sketch by wire color) or mark the wires themselves with masking tape and a pencil so you will know how to connect the wires to your new fixture. If several wires are involved or if the wiring seems more complicated and perhaps even includes a red wire, take note of the connections before you disconnect them.

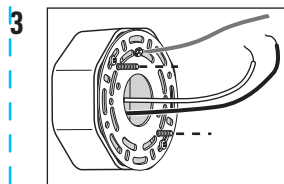
Fixture Installation



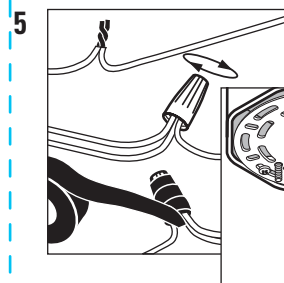
Screw the long machine screws (included) into the threaded holes on the mounting bracket. If your mounting bracket has more than 2 threaded holes, measure the center-to-center distance of the holes to make sure it matches the hole openings in the ceiling pan of your fixture.



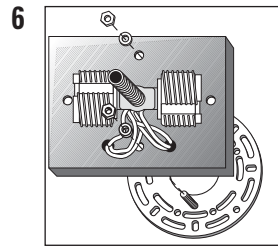
Pull the existing supply wires through the center hole of the mounting bracket. Using your old electrical box screws, secure the mounting bracket to the electrical box.



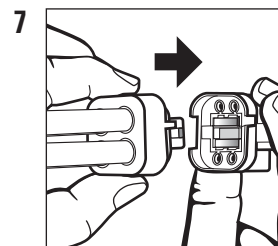
For safety and proper operation, your fixture must be properly grounded. If you are unfamiliar with the methods of properly grounding your fixture, consult a qualified electrician. A copper ground wire is pre-attached to your fixture pan. If your electrical box is made of plastic and/or has a green, or bare copper grounding wire inside, the fixture grounding wire and the electrical box ground wire should be connected together using one of the small wire nuts (included). If your electrical box is made of metal, and the electrical box is already grounded, you simply secure the bare end of the fixture ground wire to the crossbar using the green grounding screw on the crossbar.



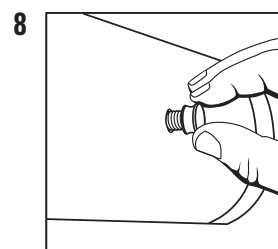
Connect the supply leads from the electrical box to the fixture wire leads using the medium wire nuts supplied in your installation hardware kit as per the illustration. The black lead from the fixture goes to the black supply lead, and the white lead from the fixture goes to the white supply lead. Secure the wire nuts properly to prevent the wires from coming loose. Tape the wire nuts to the wire using electrical tape. Carefully push the excess wires back inside the electrical box.



Position the fixture pan over the electrical box so that the machine screws protruding from the face of the mounting bracket pass through the elongated holes in the fixture pan. Secure the fixture pan to the electrical box with the nuts and washers provided in your hardware kit. The fixture pan should be tight up against the ceiling surface.



Insert the proper compact fluorescent bulbs into the sockets. (Depending on store where you purchased your fixture, your fixture may or may not include the bulbs with the fixture. If you need to purchase a bulb, you will need to purchase a **CF013W/G24Q 13W compact fluorescent bulbs for the Item # 1402X13WH fixture or CF026W/G24Q 26W compact fluorescent bulbs for the Item # 1402X26WH fixture.**) Insert the lamp into the socket, and push the base fully in until it seats. **CAUTION: DO NOT HOLD THE BULB BY THE GLASS DURING INSERTION OR REMOVAL FROM THE SOCKET TO PREVENT ACCIDENTAL BREAKAGE! HOLD THE BULB BY THE PLASTIC BASE.**



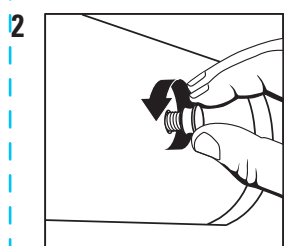
After both bulbs have been installed, it is time to mount the diffuser. The diffuser will have a hole located in the center of it. The hole should be positioned over the center piece of hollow threaded tubing and secured with the included finial.

9 Restore power to the fixture.

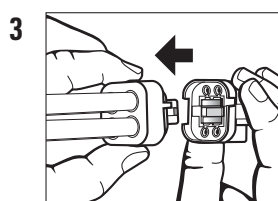
Bulb Replacement

Your bulb should last up to 10,000 hours in normal use. When bulb replacement is necessary, you must replace the bulb in the fixture with Item #: 1402X26WH with a **CF026W/G24Q 26 watt compact fluorescent bulb** and Item #: 1402X13WH with a **CF013W/G24Q 13 watt compact fluorescent bulb**. This is a 4 pin bulb, the **socket base is only compatible with a 4 pin bulb.** Do not re-lamp with any other wattage of compact fluorescent bulb.

1 Shut off main power supply. Allow sufficient time for bulb to cool properly before handling.

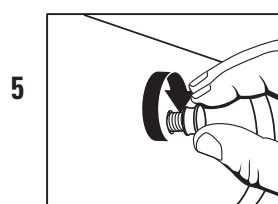


Remove the decorative finial from the threaded tubing and pull the diffuser straight out. Carefully set the diffuser aside. Dropping the diffuser could damage it.



Remove the defective bulbs from the ballast sockets. Re-attach the replacement bulbs using the same steps you following when removing the old bulb.

4 Re-attach the replacement bulb using the same steps you following when removing the old bulb. Check the orientation of the bulb with the socket. Do NOT force the plug into the socket.



After the bulb(s) has been replaced, it is time to remount the diffuser. Reposition the diffuser over the centrally located threaded tubing and secured it again with the included finial. Restore power to the fixture.


Troubleshooting Guide

Minor problems often can be fixed without the help of an electrician. Before doing any work on the fixture, shut off power supply at the circuit breaker panel to avoid electrical shock.

Problem	Cause	Solution
Fixture doesn't light	Bulb is defective	Replace bulb
	Power is off	Check if power supply is on
	Bad wire connection	Check wiring
	Bad switch	Test or replace switch
Fuse blows or circuit breaker trips when light is turned on	Crossed wires or power wire is grounded out	Check wiring connections

Cleaning Guide

Your lantern is made from quality materials that will last for many, many years with minimum care. You may want to periodically clean the diffuser, or interior of the fixture using a mild, non-abrasive glass cleaner and soft cloth. Do NOT use solvents, or cleaners containing abrasive agents. When cleaning the inside of the fixture, make sure you have the power turned off, and do not spray liquid cleaner directly onto the bulb, socket, ballast, or wiring.

 In the event you are missing any parts, or have other questions regarding installation, please call our Customer Service Department at **1-800-290-5098**.